

# Southern Vermont Arts Center



2020 ANNUAL REPORT



DEAR FRIENDS,

I imagine that 2020 was an incredibly challenging year for you. So many experienced illness, loss, separation from loved ones, and painful evidence of how much inequality still exists in our world. You might wonder if anything good came out of this year. Personally, I would give a resounding Yes. Here in Vermont, our arts and nonprofit partners came together in new ways, and our community supported their efforts with extraordinary generosity.

I'm particularly proud of the accomplishments of SVAC this past year. We opened our doors safely to give our visitors and members a message of hope and resilience through our exhibitions. We created customized camps for the children of teachers and school staff needing to ready their own classrooms for safe reopening. We turned our 100-acre campus into a programmatic space for classes, story walks, and performances. And, when our staff learned that art teachers were struggling to provide art supplies in this new environment of no-shared-materials, they created art backpacks filled with art supplies and lessons from our artist faculty — ultimately serving hundreds of students in our community.

I am equally proud and gratified at how our community gave so generously to support SVAC this year. Donors gave early to support our efforts. New donors came into the fold. We finished the renovation of the new curATE café with the support of our community. Area foundations and businesses sponsored our programs. Members near and far contributed to our overall health.

I hope you take a moment to read through the pages of this Annual Report and celebrate the successes that *you* made possible. Celebrate the good that came out of this year. As I write this letter, we are finalizing the details of our plans for the summer, which include our own programming along with expanded performances with Manchester Music Festival. In addition, we are delighted to announce that we will host the Dorset Theatre Festival's outdoor season on SVAC's campus.

I look forward to seeing you up on the hill and sharing even more ways that SVAC will engage with our community.

Thank you,

Bob Van Degna  
Board President

SVAC is grateful for the leadership of its  
**BOARD OF TRUSTEES**

Bob Van Degna  
PRESIDENT

Debbie Wight  
FIRST VICE PRESIDENT

Peter Radford  
TREASURER

Peggie Telscher  
SECRETARY

Shelagh Costello Burke

Terry Findeisen

Leslie Keefe

Allison Piper Kimball

Brian Maggiotto

Cindy Marshall

Judi McCormick

Wenke Thoman

Peter Thompson

We thank those **TRUSTEES**  
whose terms ended in 2020

Nancy Pierson

Steven Schaub

John Weiss

**SVAC STAFF**

Anne Corso  
EXECUTIVE DIRECTOR

Connie Blatchford  
DEPUTY DIRECTOR FOR OPERATIONS  
AND EXTERNAL AFFAIRS

Erin Kaufman  
MANAGER OF EDUCATION AND  
PUBLIC PROGRAMS

Seth Dopkins  
FACILITIES DIRECTOR

Alison Crites  
MANAGER OF EXHIBITIONS AND  
INTERPRETIVE ENGAGEMENT

Dorie Morgantini  
FINANCE MANAGER

K, Oyle Gulley  
FACILITIES ASSOCIATE

Mindy Wong  
CORPORATE AND FOUNDATIONS  
RELATIONS OFFICER

Abby Daley  
GALLERY ASSOCIATE

Frances Shaw  
GALLERY ASSOCIATE

Crystal Walters  
GALLERY ASSOCIATE

Iris Allen  
GALLERY ASSOCIATE



**LETTER FROM THE EXECUTIVE DIRECTOR**

At SVAC, we aren't discovering vaccines or saving lives. But we have heard from you this year that on our best

days, we help *change* lives. We strive to do so with our exhibitions and our programs on campus — and, as of 2020, online as well. This report describes our effort to offer more, to give more, and ultimately to mean more than ever to our community during this year of extraordinary suffering and upheaval.

Misoo Bang's portraits, in our *Women Take Wilson* series, featured survivors of sexual assault. When one of the subjects saw the portrait of herself for the first time, she said, "I feel empowered and energized and inspired to be the warrior that Misoo created — capturing an inner spirit that indeed has more than survived. This is life-changing." A work of art returned to her, and to many women like her, both confidence and power.

In the following pages we have tried to tell important stories:

Visitors moved by seeing art destigmatizing mental illness

Students benefiting from scholarships that allowed them to participate in class

Parents who needed a safe place for their children to come as they prepared their own workplaces for safe reopening

Performers and patrons who relished the opportunity to perform or hear live music once again

Children donning layers of clothing to participate in an outdoor Halloween

This Annual Report is a testament to what the arts can bring to its community. It is also a testament to what a generous community can achieve. I want to extend a heartfelt thank you to each and every donor, member, sponsor, and grantmaker who helped SVAC meet its mission — and sometimes, change lives for the better.

Thank you,

Anne Corso  
Executive Director

In spite of the pandemic, **2020 has been a transformative year of emergence and renewal** for Southern Vermont Arts Center.



**During the winter season**, SVAC connected with its year-round community not only via education programs and exhibitions, but also by creating and hosting various events with community partners. Students from Burr and Burton Academy performed their spring “Prisms” concert in the Arkell Pavilion; SVAC hosted a lecture for Green Mountain Academy for Lifelong Learning featuring Shelburne Museum’s Associate Curator, Katie Wood Kirchhoff; local chefs brought their best soups and chowders for the Dorset Equine Rescue’s fundraiser the “Chowder Challenge;” and we hosted local innkeepers for our newly annual Innkeepers’ Reception.





## MORE THAN MEETS THE EYE EXHIBITION

*Facing stigma and challenging expectations of what mental illness “looks like” through art*

We opened our doors during the winter season and featured *I Am More: Facing Stigma*, Yellow Tulip Project’s photography exhibition in Yester House. The exhibition featured black and white portraits, captured by Maine photographer **Lissy Thomas**, of people dealing with mental health challenges personally or through the experiences of family or friends. The individuals—musicians, artists, nature lovers, parents, and more—are dedicated to challenging assumptions and stigma around mental illness and what mental illness “looks like.”

SVAC featured complementary exhibitions including **Gisela Gamper**, renowned photographer, who documented her personal journey of love and mourning her husband’s passing through self-portraits; Bennington College Visiting Professor **Terry Boddie**’s series *Blueprints* that took a complex approach to the legacy of the transatlantic slave trade, pairing it with modern mass incarceration; and **Carl Austin Hyatt**, nationally recognized photographer, who showed portraits made from two decades of travels in the Andes of Peru.

The art therapy group **Forty-Seven Main Street Artists Group** captured the inspirational power of abstract self-expression in paint. In mixed media portraits, students from area schools presented themselves as they wanted to be seen. **United Counseling Service** staff and clients contributed self-portrait photographs and written statements about their journeys.

Partnering with local schools and health agencies to offer panels, gallery talks by artists, and family activities, **SVAC successfully served 946 youth and adults and 8 out of 14 VT counties.**

“Our role in curating this exhibition was to create an opportunity for art to inspire connections and conversations. The exhibition provided space to come together, which is at the center of our mission.” — ANNE CORSO, SVAC’S EXECUTIVE DIRECTOR

*“I am more than a dress size;” “I am more than my cancer;” “I am more than past trauma”*

— COMMENTS VISITORS SHARED IN THE EXHIBITION’S RESPONSE GALLERY

## ART ONLINE: Transformative Learning

Sparking creativity and connection virtually in the local and national community

**At the start of the COVID-19 pandemic**, SVAC transformed its in-person workshops, classes, and camps into innovative online learning spaces. We offered a wide range of programming, including drawing film stills, painting with watercolor and sumi ink, hand spinning fiber into yarn, photography, camps for youth in animation and mixed media, artist lectures and panels, a community conversation about the documentary *The Artist and the Astronaut*, and a literary discussion about three memoirs of women in the arts. During this challenging time, we saw the impact of art in all forms for artists, individuals, children and families--and its ability to serve as an outlet for self-expression.



SVAC received tremendous support from sponsors and foundations and partnered with incredible schools and local organizations including Burr and Burton Academy, Community Food Cupboard, Earthrise Films, Hullabaloo Danceshop, Merwin Studios, Northshire Day School, Red Fox Community School, Shaftsbury Elementary School, and Taconic Music. **Bringing the essence of the arts center directly to homes, SVAC reached over 1000 participants.**



“My girls and I had a BLAST painting together at home. It will certainly be remembered in our family as a happy memory of being home together during an otherwise difficult time.”

“Thank you for this opportunity. I have been pretty isolated since February when they discovered lung cancer. Operation to remove part of lung and am really on the mend. This is a wonderful way to get me back in the “swing” of things.”

“I am so glad to see you are offering online courses during this time. I normally would not have been able to attend them in person, since I live in Sparta, NJ. Now, I am meeting others in the community, developing a skill and being taught by a professional. Thank you.”

“I really love the video you created, and I posted it on our classroom’s remote learning site to share with our families. Thank you for helping us to continue to connect through art even while we are apart!”



## GRANTS AND SPONSORSHIPS

- The Bank of Bennington
- Berkshire Bank Foundation
- George W. Mergens Foundation
- The Mountain Goat
- O'Brien, Shortle, Reynolds & Sabotka, PC
- Price Chopper's Golub Foundation
- rk MILES
- Shire Kids
- Southwestern Vermont Health Care
- State of Vermont - Department of Children & Families
- Vermont Arts Council
- Vermont Humanities
- Vermont Mutual Insurance Foundation
- W.H. Shaw Insurance Agency, Inc.
- Windham Foundation





## THE ART OF OUTDOORS

**As the weather warmed up**, SVAC geared up its outdoor spaces to be used safely for visitors. Requiring masks and ensuring physical distancing, we offered programs and events that included film screenings on the Arkell Lawn, an evening concert with Maxine Linehan and friends, Taconic Music's violin performance, chamber music performances, Manchester Music Festival's digital concert series, and camps and workshops in plein air painting, lantern-making, circus adventures, photography, sculpture, and theater.





## ARTFUL CUISINE: curATE café

Beautifully renovated for an **elevated dining experience** and making weddings, receptions, meetings, and special occasions **a masterpiece**

“curATE is the union of food, art and nature. Offering select foods surrounded by intriguing works of art with sweeping mountain views, it is the newest artistic endeavor at SVAC.”

— LAUREN BRYANT, PROPRIETOR, CHURCH STREET HOSPITALITY



Located in historic Yester House, curATE café is an iconic addition to SVAC's property. While the restaurant had undergone several iterations over the years, the new space went through a grand renovation and expansion. With the planning and building expertise of BreadLoaf architects, the café has now doubled in existing dining space. The 950-square-foot restaurant pairs modern amenities such as all-season heating and air conditioning, a custom six-seat patron bar, new windows, lighting, flooring and furnishings--while honoring historic details such as the 1917 tiled fireplace, exterior clapboards and hardware. The renovation also features expanded patio seating with a view to the mountains and rotating art displays in its interior.

**curATE café** comes to SVAC in partnership with Church Street Hospitality, known for their acclaimed establishments, Barrows House Inn & Restaurant, The Dorset Inn, The Publyk House, and Dorset Bakery & Café. curATE will bring a modern sensibility paired with classic and regional fare. During the day, patrons can enjoy small plates, salads, artisanal sandwiches, homemade baked goods, gourmet coffee beverages; and for dinner, curATE will offer a unique culinary approach to the best ingredients Vermont has to offer.

**curATE café** will delight diners enjoying the museum's art and beautiful grounds. The café will serve as a destination for dining, community gatherings, and private events.

## WOMEN TAKE WILSON EXHIBITION

In honor of **100 years** of women's constitutional right to vote, and in celebration of extraordinary **women artists**



“I feel empowered and energized and inspired to be the warrior that Misoo created - capturing an inner spirit that indeed has more than survived. This is life-changing.”

— CAROLE, UPON SEEING HER OWN PORTRAIT IN MISOO BANG'S GIANTESS SERIES

**Through sheer scale** and use of power tools, confronting art that is traditionally seen as a female medium, changing myths around Asian stereotypes and giving voice to sexual abuse survivors, and highlighting the importance of women's role in history, **Misoo Bang, Lauren Booth, Adrien Broom, Patty Hudak, Chalice Mitchell,** and **Sarah Tortora** all reclaimed narratives of what an artist can do in SVAC's *Women Take Wilson* exhibition.

A sea of sixteen giant women loomed large in the Wilson galleries this summer. The *Giantess* series, by artist Misoo Bang, featured her own oversized image as well as those of fellow survivors of sexual abuse, to reclaim their power. Bang was one of the six women artists featured in the *Women Take Wilson* exhibition series — a series that celebrated women artists in 2020, a year to commemorate the 100th anniversary of the passage of the 19th Amendment. *Monumental: Misoo Bang and Sarah Tortora* paired Bang's painted and collaged canvases with Philadelphia artist Sarah Tortora's





sculptures, which hearkened back to ancient Greek painting and architecture. Lauren Booth's exhibition, *Happy*, featured Booth's whimsical sculptures and neon works, and spilled out into the landscape with an installation that cloaked 32 trees with hand-knitted scarves.

The second installation of *Women Take Wilson* featured internationally known photographer Adrien Broom's dream-like images, Vermont Art Council Creation Grant awardee Patty Hudak's massive fabric installation, and Chalice Mitchell's figurative paintings which blended influences of Renaissance iconography with Japanese brush painting.

The celebration of women's creative achievements inspired much of SVAC's public and educational programming. Intimate "Ladies' Nights" events allowed SVAC's Executive Director, Anne Corso, to take visitors on an art walk of the *Women Take Wilson* exhibitions. Virtual "Meet the Artist" discussions with exhibiting artists Chalice Mitchell, Patty Hudak, and Adrien Broom allowed audience members to get an inside view of the artists' creative process. An outdoor film series included the little-known story of women's baseball in *A League of Their Own*; and biopics *Toni Morrison: Pieces of Me* and *Amazing Grace* featured author and poet Toni Morrison and legendary singer, Aretha Franklin. Middlebury College professor **Megan Mayhew Berman**, led a book discussion *Reading Strong Women* in which she considered the lives of Françoise Gilot, Jesmyn Ward, and Sally Mann. SVAC's Story Walk project placed oversized installations of children's literature by women authors, with the central theme of girls' empowerment. An uplifting concert by vocal powerhouse **Maxine Linehan** was one of SVAC's most memorable outdoor performances.

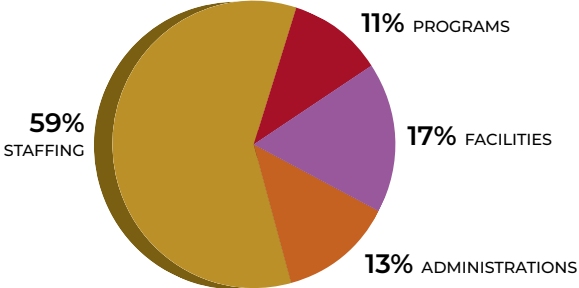
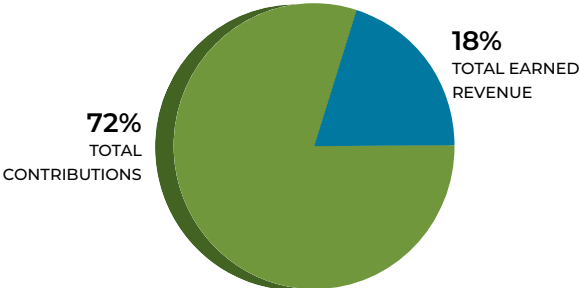
**Like many other institutions during the pandemic**, SVAC saw a downturn in its earned revenue last year. That said, revenue actuals during the full year were \$773,486, which was remarkably close to budget (\$773,700). A \$157,381 shortfall in programming income was offset by a \$137,850 excess in the annual fund, which totaled \$462,850 against a plan of \$325,000. Other notable differences during the year as a whole were stronger-than-expected art sales, at \$37,245; and stronger grant and bequest revenues, at \$155,444. In short, the generosity of the community truly lifted up SVAC financially.

Overall, cost-cutting measures due to the pandemic had a dramatic impact. Annual administrative expenses were \$690,433 (\$154,520 below plan); while other expenses came in \$16,367 below plan, for overall annual expenses of \$861,375.

Not reflected on the Income Statement are the following: SVAC received \$79,400 from the Paycheck Protection Program and \$6,000 from the SBA's Economic Injury Disaster Loan, both of which have been forgiven. We were grateful to receive a further \$185,341 from the community to complete the café and other capital improvements.

EARNED REVENUE	
Programs	\$ 111,381
Membership	38,534
Interest	927
<b>TOTAL EARNED REVENUE</b>	<b>\$ 150,842</b>
CONTRIBUTIONS	
Annual Fund	\$ 462,849
Grants & Restricted Gifts	155,444
Sponsorship & Scholarship Fund	4,351
<b>TOTAL CONTRIBUTIONS</b>	<b>622,644</b>
<b>TOTAL INCOME</b>	<b>\$773,486</b>

EXPENSES	
Programs	\$ 97,840
Facilities	142,910
Administration	114,264
Staffing	506,361
<b>TOTAL EXPENSES</b>	<b>\$ 861,375</b>
Operating Loss	-\$87,889
Endowment Draw to Support Operations	\$87,889





## VOLUNTEERS ARE THE HEART AND SOUL OF SVAC

SVAC is indebted to the volunteers who so generously give of their time and talent. In 2020, our volunteers mounted exhibitions in Yester House and the Wilson Museum, decorated and organized for Halloween on the Hill, catalogued our library holdings, and assisted with family events. Some have volunteered their services on committees and taught classes and workshops. Others provide professional services such as legal services, financial expertise, photography, and videography. Overall, our volunteers have dedicated thousands of hours of service to SVAC. **We couldn't do it without you!**

### COMMUNITY PARTNERS, IN-KIND DONORS AND VOLUNTEERS

#### Businesses & Organizations

Above All Vermont  
Artscope Magazine  
Burr and Burton Academy  
Church Street Hospitality  
Community Food Cupboard  
Currier Memorial School  
Delish Design  
Dorset Theatre Festival  
The Dorset School  
Fisher Elementary School  
Flood Brook School  
Forty-Seven Main Street  
Residence  
Green Mountain Academy  
for Lifelong Learning  
Home Away from Home  
Joseph J. Blair Tree Care  
Long Trail School  
Manchester Business  
Association  
Manchester Community  
Library  
Manchester Elementary  
Middle School

Manchester Historical  
Society  
Manchester House of Pizza  
Manchester Music Festival  
Manchester Village School  
Maple Street School  
Mettawee Community  
School  
Mettawee Mill Nursery  
Mother Myrick's  
The Mountain School at  
Winhall  
Northshire Bookstore  
Old Mill Road Media  
Orvis  
Price Chopper  
Red Fox Community School  
rk MILES  
Sam's Woodfired Pizza  
Shaw's Supermarket  
Shaftsbury Elementary  
School  
Small Batch Granola  
Southwestern Vermont  
Medical Center  
Stratton Mountain School  
Sunderland Elementary  
School

Stewart's Shops  
Taconic Music  
United Counseling Services  
Vermont Arts Council  
Vermont Arts Exchange  
Vermont Curators Group  
Vermont School for Girls  
Vermont Inclusive Arts  
Village School of North  
Bennington

#### Individuals

Tobianna Aldrich  
Meg Benasich  
Matt Bittel  
Maeve Bouchett  
Orland Campbell  
Kathryn Chamberlain  
Irene Cole  
Karl Cyrul  
Karl Dooling  
Kyle Dooling  
Terry Findeisen  
Lu French  
Maria French  
Lauren Haun

Kathy Hauser  
Joel Ianuzzi  
Ben James  
Thomas Kehoe  
Kristen Kimball  
Michelle Lewis  
Julia Lund  
Maud Maciak  
Megan Mayhew Bergman  
Andrea Myklebust  
Angie Merwin  
Tom Merwin  
Travis Muckle  
Bill Muench  
Ashlin Niemczyk  
Kathy Penge  
Abby Raeder  
Steven Schlusell  
Stan Sears  
Tansy Sears  
Anthony Surratt  
Maclean Thuermer  
Emily Umphlett  
Sophie Weill  
Trish Weill  
Elizabeth Winthrop

**We are so very grateful to our donors and members who have held our vision of the Southern Vermont Arts Center.** We have endeavored to accurately acknowledge your

names and contribution. Many thanks for your continuing support. — ANNE CORSO

**Luminaries (\$50,000+)**

Penny and Alan Griffith  
Janice Izzi and Lyman Orton  
Linda L. Oskam  
State of Vermont  
Margaret Telscher and Tom Snopek  
Mary Anne and Bob Van Degna  
Deborah and William Wight

**Visionary (\$25,000-\$49,000)**

Susan Hunter and Doug Watson  
Judi and TD McCormick

**Leadership Circle (\$10,000-\$24,999)**

Anonymous  
Anne Corso and Tim Griffith  
Connie and Bob Ferguson  
Kathleen Fisher and Rocco Maggiotto  
Allison and Walker Kimball  
Georgine MacGarvey and Steve Holman  
Stanley Stroup  
Jane and Bill Told  
Vermont Arts Council

**Patron's Circle (\$5,000-\$9,999)**

Constance Beaty  
Berkshire Bank Foundation  
Judith Buechner  
Mary and Alec Gerster  
Claudia and Peter Kinder  
Maverick Capital Foundation  
Margi and Michael Picotte  
Katherine and Adam Stauffer  
Wenke Thoman and William Sterns  
Patricia and Peter Thompson

**Community Circle (\$2,500-\$4,999)**

Shelagh Costello Burke and Michael Burke  
Maxine Linehan and Andrew Koss

George W. Mergens Foundation  
Valerie and Peter Radford  
Vermont Humanities Council  
The Windham Foundation

**Advocate (\$1,000-\$2,499)**

Alcyon Foundation  
Dorothy Ashton  
Lynn and Jerry Babicka  
The Bank of Bennington  
Diana and Michael Bickford  
Judith and Parker Blatchford  
Hoa and Orland Campbell  
Jane S. Childs  
Linda and William Drusic  
Patricia and Richard Fowler  
Ginny Freeman  
Lu and Clark French  
Roby Harrington  
Francis Hatch  
Diana and Thomas Kelly  
Elaine and Arthur Kelton  
Leila and Jon Linen  
Jeanne D. Little  
Ursula and Paul Lowerre  
Margaret Mazer  
Georgette McAuley  
Axel Mundigo  
Connie and Arthur Page  
John Peckham  
The Perkins Charitable Foundation  
Maggie and John Picotte  
Nancy Pierson  
Price Chopper's Golub Foundation  
Erin Ross and Peter Hershberg  
Judie Robbins  
Southwestern Vermont Health Care  
Carolyn and Bill Stutt  
Anthony Surratt and Todd Harrington  
Derry Taylor  
Els Van Woert and Simon Perkins  
Courtney and Matthew Weir

Constance West  
W.H. Shaw Insurance Agency

**Sustainer (\$500-\$999)**

Sherri and Robert Alper  
Deborah and John Cave  
Marianne and Lionel Chaikin  
Caitlin and Timothy Fitzsimmons  
Jacqui and David Griffith  
Charlotte Harris  
David Hoopes  
Joyce and Robert Jones  
Leslie and Brian Keefe  
Katie and Rick Kelley  
Mindy and Phil Kirstein  
Andrew Mellett  
O'Brien, Shortle, Reynolds & Sabotka, PC  
Rebecca Robinson  
Christine and Kenneth Rush  
Irene Schultz  
Cathy Stewart  
Nancy Truettner  
Lou and Bruce Zellner

**Contributor (\$250-\$499)**

Chip Ams  
Jackie and Ron Baker  
Pamela and Brian Barefoot  
Wendy Baurmeister  
Ann and Joseph Berkery  
Connie and Jon Blatchford  
Carolyn Blitz and Joshua Sherman  
Anne Brett  
Carol and Brendan Conroy  
Christian Goff and Stephen Drusic  
Mary Jo Gourd  
Howard Halligan  
Libby and Tom Hipp  
Anne and Michael Himmel  
Kelly and Webber Hudson  
Jessie Hutcheson  
Linda and Don Ihde  
Eileen Kaufman

Fredricka and Walker Kimball  
Dmitry Krivin  
Kyle Lawrence  
Roxanne Leighton  
Joann Limbacher  
Cindy Marshall  
Patricia McGrath and Joel Iannuzzi  
Caren and Joe McVicker  
Patty and Keith Michl  
Dorie and Peter Morgantini  
Barbara and Joe O'Donnell  
Carmen Bodge and Paul Parker  
Maryann and Charles Pascarella  
Taconic Music Inc.  
Tara Shannon and Hugh Johnson  
Joanne and Edward Shapoff  
Jennifer and Andrew Shaw  
Carol and Michael Smith  
Gay and Roger Squire  
Catherine and J.D. Sullivan  
Bebbins and Jim Yudes  
Barbara Zapin and Matthew Lerman  
Michelle and Elliott Zide  
Nancy and Tom Ziegler

**Supporters (\$100-\$249)**

Winifred and Herbert Aboff  
Linda K. Adler  
Susan and Salvatore Anicito  
Fran and Mark Aronowitz  
Maureen Auer  
Judith Barrows  
Christina Battalia and Oliver Maggard  
Anne and Geoffrey Bennett  
Catherine and Derek Boothby  
Mary and Jordan Broadworth  
Marilyn and David Brockway  
Gail and Donald Brodie  
Carolyn Brogan and Yoshi Akiyama  
William Burke  
Nicole Campbell

**Supporters (continued)**

Sheila and Bill Childs  
Joann and Michael Cone  
Cliff Cooper  
Claudia and Jeremy Dole  
Evelyn Estey  
Nancy and Robert Faesy  
Fran and Chip Fauver  
Sherry and Glenn Firestone  
Betsy and John Fogarty  
Forty Seven Main Street, Inc.  
Randy and Corwin Frost  
Jeannie and Charles Griffith  
Margaret Hamilton  
Patricia Hancock  
Diane and Tommy Harmon  
Marcia and Robert Horowitz  
Betsy Hubner  
Carol Jaffe  
Christine Jamison  
Anna Johansen and Tim Ward  
Arden Kahlo and Stan Okin  
Pauline and Thomas Ketchum

Clarence King  
Juliette Combe Larson  
Ann Keller and Richard Latour  
Emy and John LaVecchia  
Jane and John LaVecchia  
Lee and Jock Lawrason  
Gail LeBoff  
Patricia and James Lee  
Carol Luders  
Heidi and Michael Lynn  
Pamela and Alvon Macauley  
Manchester Music Festival  
Ann and Matthew Mataraso  
Joan McGinty  
Heather McGuire  
Margo and Art McKenna  
Fran and Ed Mellett  
Linda and Robert Mielenhausen  
Dorothy and Peter Morgantini  
Athena Motal  
The Mountain Goat North, Inc  
Tom Muench

Dee Myrvang  
Marty and Jim Neumeister  
Frederick Noonan  
Jeff Nyweide  
Sarah O'Connell  
Carol O'Connor  
Cheryl and Jim O'Connor  
Patricia and Lance Odden  
Kate and George Orme  
Robin and Frank Palmeri  
Carol and Barry Patterson  
Elizabeth H. Perrott  
Jane and Joseph Personeni  
Patricia and Robert Phillips  
Susan and Bill Picotte  
Murrie and Michael Polifka  
Marianne M. Pollak  
Donna and Craig Powers  
Barbara J. Price  
Margi and Andy Putney  
R.K. Miles, Inc.  
Edwin Reade  
Barbara Reed

Meg and Brooks Robbins  
Susan and Lee Romano  
Ann and Alfred Ruesch  
Sunny Saelinger  
Christie Salomon  
Jill and David Sands  
Elizabeth and Joseph Santarasci  
Barbara Sarvis  
Janie and George Schildge  
James Schlessinger  
Paula and Richard Schwartz  
Carol Scott  
Shire Kids  
Jenise and Patrick Sileo  
Barbara and David Spizzirro  
Timothy J. Storch  
Michi Tashjian  
Brian Topping  
Liana Toscanini  
Sunny and Frank Velie  
Virginia Warren  
Amy Wright



**Friend (\$1-\$99)**

Vivian Ciolli Ackerman  
Jan Adams  
Maria Alvarez  
Lauren Alwan  
Christine Anderson  
Anonymous  
Christine Atkins  
Lynne Averill  
Elinor Banquer

Florence Barad  
Irene Barbazetto  
Barbara and Albert Bellino  
Sandra Birch  
Georgeanne Bonifanti  
Susan and Peter Bradford  
Lori Bradley  
Missy and Patrick Briody  
Kim Butterworth  
Geoffry Campe

Mary Cardel  
Aubrey Carpenter  
Maureen Chaffee  
Laura and James Clune  
Rebecca Coffey  
Irene Cole  
Gail and Michael Dacey  
Nikolai DeBrito  
Francine Devitt  
Jo Ann Dongweck

Karl Dooling  
Susan Dorgeloh  
Jo Dowling  
Kathy and Robert DuGrenier  
Susana Epstein  
Kathleen and John Fairley  
Terry Findeisen  
Donna Fisher  
Exxonmobil Foundation  
Stephenie Frawley  
Jean Freebern  
Ann Friedhofer  
Anne Gallagher  
Annette Gallo  
Ann and Tom Gaudreaux  
Tom Gaylord  
Geoffrey Gee  
Patti Gilbert Hughes  
Jaime Gilman  
Emily Gourlay  
Ann Graham  
Timothy Green  
Carol Green  
Elizabeth Hahn  
Shirl Harrington  
Steve Harrington  
Heather Henryon  
Troy Hickman  
Brian Hiller and Don Dupont  
Susan and Donald Hinkel  
Ghetta Hirsch  
Ruth Hoffman  
Andrea Hogan  
Lise Hogan  
Jennifer Hooley  
Annemaria Hornby  
Terra Hughes  
Barbara and Eric Jaffe  
Vir Kashyap  
Erin Kaufman  
Meg Kenny  
Kristen Kimball  
Victoria Kohler  
Jane Kolas  
Barbara and George Kramer  
Jean Kroeber  
Alexandra and Peter Langstaff  
Dianne Larkin-McDonough  
Frances LeMieux  
Clarissa Lennox  
Pamela and Louis Licht







Axel Mundigo  
*in tribute to Anna Mundigo*

Elizabeth and Joseph Santarlaschi  
*in tribute to Terry Findeisen*

Gillian Stewart  
*in tribute to John Casale*

Stanley Stroup  
*in tribute to John Casale*

Catherine Sullivan  
*in tribute to John Casale*

#### Grants

Berkshire Bank Foundation  
George W. Mergens Foundation  
Price Chopper's Golub Foundation  
State of Vermont  
Vermont Arts Council  
Vermont Humanities  
Vermont Mutual Insurance Foundation  
Windham Foundation

#### Friend (continued)

Elizabeth Lindenberg  
Lori Linskey  
Todd Lockwood  
Patricia Lovell  
Lauren and Scott Magrath  
Liam Maleh  
Lisa Mann  
Jennifer Marcotte  
Allison Mason  
Tina Mattison  
Lilli Mayerson  
Martha Mazeika  
Brooke McGowan  
Suzie Mckenzie  
Susan McManus  
Joanne McManus  
Joanna and Donald Mintzer  
Kari and Paul Monterosso  
Anne Morell  
Kit and Dan Mosheim  
Ava Moskin  
Carol Munson  
Beth Nagle  
Ashlin Niemczyk  
Cameron O'Mara  
Kay Olson  
McKenna Olson  
Judy Pagnucco  
Amy Pandolfi

Amy Panitz  
Joan Pantzer  
Paige Pappianne  
Gail Peck  
Melissa Pheterson  
Barbara Pierce  
Ann Pierce  
Anna Polesny  
Heather Putnam  
Helene Quinn  
Sally Ragland  
Polly Raine  
Norma and Marvin Rappaport  
Rebecca and Jim Raymond  
Ron Rosenstock  
Delia Saenz  
Jennifer and Matthew Samuelson  
Letitia Scordino  
Carolyn and Timothy Scully  
Shelagh Shapiro  
Deborah Shea  
Lisa Scotte  
Roxanne Skinner  
Emery Smith  
Cindy Spence  
Christine Spencer  
Stephen Spielman  
Gillian Stewart  
Catherine Stewart

Polly Stone  
Catherine Sullivan  
Leslie Sullivan  
Norma Susswein Saks  
Gay Thimm  
Jennifer and David Thuermer  
Sarah and Robert Treat  
Eugene Uman  
Sharon Walker  
Patrick Walsh  
Mary Webster  
Susan White  
Fadia Williamson  
Jackie Wilson  
Kim Eng Yeo  
Rebecca Young  
Siobhan Young  
Thomas Young

#### In Tribute

Gail and Donald Brodie  
*in tribute to John Casale*

Francine Devitt  
*in tribute to John Casale*

David Hoopes  
*in tribute to Katherine Hoopes*

Christine Jamison  
*in tribute to John Casale*

Emy and John LaVecchia  
*in tribute to John Casale*

Patricia and James Lee  
*in tribute to John Casale*

#### Sponsorships

The Bank of Bennington  
rk MILES  
The Mountain Goat  
O'Brien, Shortle, Reynolds & Sabotka, PC  
W.H. Shaw Insurance Agency  
Shire Kids  
Southwestern Vermont Health Care

#### Capital Campaign - Café

Kathleen Fisher and Rocco Maggiotto  
Georgine MacGarvey and Steve Holman  
Leslie and Brian Keefe  
Linda Oskam  
James Pierson  
Margaret Telscher and Tom Snopek

*Contributions that were received in 2019 were acknowledged in SVAC's 2019 Annual Report*

## 2020 MEMBERS

### Supporting Members

Winifred and Herbert Aboff  
Jan and John Adams  
Ellen Agress and Jay Gerber  
Judy Albright  
Elizabeth Alden  
Iris Allen  
Julia and Stephen Allen  
Sherri and Robert Alper  
Chip Ams  
Susan and Salvatore Anicito  
Fran and Mark Aronowitz  
Dorothy Ashton  
Robin Avery  
Lynn and Jerry Babicka  
Jackie and Ron Baker  
Pamela and Brian Barefoot  
Judith Barrows  
Wendy Baurmeister  
Constance Beaty  
Melissa and Don Bell  
Barbara and Albert Bellino  
Pat and Jack Bennett  
Anne and Geoffrey Bennett  
Ann and Joseph Berkery  
Polly and Fred Berndt  
Joan Bertin  
Diana and Michael Bickford  
Barbara Bishop  
Thomas Blakely  
Judith and Parker Blatchford  
Connie and Jon Blatchford  
Carolyn Blitz and  
Joshua Sherman  
Mindy and Alan Bloom  
Susan and Robert Blumenthal  
Carmen Bodge and  
Paul Parker  
Catherine and Derek Boothby  
Margaret Boyle  
Maureen and Robert Brandt  
Sandra Brent  
Gail and Donald Brodie  
Carolyn Brogan and  
Yoshi Akiyama  
JoAnne and Francis Brophy  
Lauren and Steven Bryant  
Judith Buechner  
Patty and Tim Burch  
Julie and Andrew Burden  
Becky and Bill Burke  
Shelagh Costello Burke and  
Michael Burke

Donna and Gordon Calder  
Julie Callahan and  
Bruce Fleming  
Hoa and Orland Campbell  
Margaret Canavan  
Marilyn Cavallari  
Deborah and John Cave  
Karen and Glenn Cestaro  
Marianne and Lionel Chaikin  
Kathryn and Charles  
Chamberlain  
Adriana Chichester  
Jane Childs  
Janice and Peter Chingos  
Rhea and James Clark  
James Clubb  
Laura and James Clune  
Lucy and James Comly  
Carol Cone  
Carol and Malcolm Cooper  
Clifford Cooper  
Anne Corso and Tim Griffith  
Joyce Cowper  
Janet Crowder and  
Peter Cooper  
Gail and Michael Dacey  
Martha and Richard Dale  
Abigail and Chris Daley  
Kate and Patrick Daly  
Robert Davidson  
Kathleen and Abbott de Rham  
Clare De Zengotita  
Susan and Carlo DeRege  
Paula and Robert DiCrosta  
Joan DiMonda  
Sergine Dixon  
Claudia and Jeremy Dole  
Natalie and Bryan Donovan  
Cornelia and Dick Dopkins  
Seth Dopkins  
Maegan and Jay Douglas  
Linda and Bill Drusic  
Shelli and Stuart DuBoff  
Patricia Dupree  
Elaine Eff  
Ruth and Norm Ellenbogen  
Nancy and Daniel Ellis  
Mackenzie Ellis  
Vicky Eng and Brian Fallon  
Mary English  
Evelyn Estey and Ron Crepeau  
Tania and Thomas Evans  
Katie Ewald

Beth and Bill Feehan  
Terry Findeisen  
William Finn  
Sherry and Glenn Firestone  
Kathleen Fischer and  
Rocco Maggiotto  
Robin and Marc Fisher  
Caitlin and Timothy  
Fitzsimmons  
Betsy and John Fogarty  
Marsha Fonteyn  
Cherise and George Forbes  
Patricia and Richard Fowler  
Linda Foxworthy and  
Alan Brown  
Stephenie Frawley  
Christine Fredericks  
Virginia Freeman  
Lu and Clark French  
Hilary French  
David French  
Pamela Frothingham  
Robert Fuchs  
Nancy Fuller  
Catherine Gallaher and  
Roger Goldstein  
Kathleen Galop  
Maureen and Thomas Ganes  
J. Violet Gannon  
Sara Garay  
Flora and Irwin Garsten  
Mary and Alec Gerster  
Deanne Gilman and  
Tom Walsh  
Christian Goff and  
Stephen Drusic  
Carol and Philip Goldsmith  
David Golibersuch  
Dorothy and William Goode  
Mary Jo Gourd  
Peter Gray  
Dale and Jay Gress  
Jacqui and David Griffith  
Jeannie and Charles Griffith  
Nancy and Charles Griffith  
Penny and Alan Griffith  
Janita and Garney Griggs  
Laura and Sean Grimes  
Donald Groll  
Kayla and Kyle Gulley  
Howard Halligan  
Kimet and John Hand  
Lois and John Harding  
Diane and Tom Harmon

Charlotte Harris and  
John Roach  
David Andrew Harris  
Francis Hatch  
Linda Hauge  
Mary-Anne Hayes  
Anne Hayes  
Martha and Richard  
Heilemann  
Patricia Heins  
Frank Herron  
Ruthann and William Hession  
Jenna Hildebrand  
Libby and Tom Hipp  
Arlene and Daniel Holtzman  
Karen Holtzman  
Andrea and Howard  
Honigsfeld  
Bonnie Hube and  
James Whittemore  
Nancy Hughes  
Susan Hunter and  
Doug Watson  
Jessie Hutcheson  
Elizabeth Hutchings  
Janice Izzi and Lyman Orton  
Anne and Richard Jackson  
Barbara and Eric Jaffe  
Carol Jaffe  
Christine and Frank Jagisch  
Rebecca and Randolph  
Johnson  
Joyce and Robert Jones  
Tom Joyce  
Arden Kahlo and Stan Okin  
Peggy and Andrew Kahn  
Maxine Kaplan and  
Howard Kopelson  
Elizabeth Karet  
Judy and Stewart Katz  
Erin Kaufman and  
Mark Tashjian  
Leslie and Brian Keefe  
Katie and Rick Kelley  
Diana and Thomas Kelly  
Elaine and Arthur Kelton  
Nancy Kemper  
Colleen Kilbreath  
Allison and Walker Kimball  
Kristen Kimball  
Claudia and Peter Kinder  
Topsy and Andrew King  
Melinda and Philip Kirstein  
Jane and Arthur Klonsky

Ursula and Ed Knowles  
 Deb and Bill Knowlton  
 Victoria Kohler  
 Judy Kolva and  
 Gaetano Montelione  
 Barbara and George Kramer  
 Sandra and Daniel Krivit  
 Teresa and Louis Kronfeld  
 Alexandra and Peter Langstaff  
 Rose Lansbury  
 Juliette Combe Larson  
 Emy and John LaVecchia  
 Elizabeth and Gavin Leckie  
 Mary and Larry Lee  
 Patricia and James Lee  
 Ellen and Roger Leeds  
 Debbie and Eldredge Leeming  
 Roxanne Leighton  
 Eve Leons and Matt Dall  
 Susan Levitin and  
 Douglas Levine  
 Stephanie and Laurence Levy  
 Darren Lilley  
 Linda and Shannon Limoges  
 Maxine Linehan and  
 Andrew Koss  
 Leila and Jon Linen  
 Jeanne D. Little  
 Cathy Long  
 Christina Long  
 Ursula and Paul Lowerre  
 Michelle Lowes  
 Carolyne and Jon Lundberg  
 Jeffrey Lynch  
 Georgine MacGarvey and  
 Steve Holman  
 Charles Macintosh  
 Ruth MacPherson  
 Brian and Gabriela Maggiotto  
 Ellen and John Maher  
 Dolores Mahlmann  
 Gwen and James Maiella  
 Sandra Maloney  
 Anna and Joseph Mancini  
 Mary Rita Manley  
 Jean Elizabeth Manning  
 Elizabeth and Spencer Marsh  
 Cindy Marshall and  
 Craig Waller  
 Wendy Martin  
 Ann and Matthew Mataraso  
 Margaret Mazer  
 Marilyn and Robert Mazur

Georgette McAuley and  
 Kevin Duffy  
 Bob McCafferty  
 Michelle McCartan and  
 Brigid McCartan  
 Judi and TD McCormick  
 Joan McGinty  
 Allison and JJ McGowan  
 Patricia McGrath and  
 Joel Iannuzzi  
 John McInerney  
 Gail and Tom McLaughlin  
 Dewey and Paul McNamara  
 Caren and Joe McVicker  
 Fran and Ed Mellett  
 Andrew Mellett  
 Andrew Melton  
 Patty and Keith Michl  
 Cricket Mikheev  
 Nancy Miller  
 Mary and Walter Miller  
 Frances Mills  
 Joanna Mintzer and  
 Donald Ferrell  
 Nina and David Mooney  
 Ann and Frank Morgan  
 Dorothy and Peter Morgantini  
 Jean and John Morris  
 Bill and Barbara Muench  
 Kristin Mullaney and  
 David Ertz  
 Axel Mundigo  
 Marion and Skip Murfey  
 Naneen and Axel Neubohn  
 Marty and Jim Neumeister  
 Elaine and David Nordby  
 Lynette Novick  
 Nancy and David Nurnberger  
 Sarah O'Connell  
 Cheryl and Jim O'Connor  
 Barbara and Joe O'Donnell  
 Mary Beth and Mark O'Donnell  
 Patsy and Lance Odden  
 Sarah Ogden  
 Linda Oskam  
 Connie and Art Page  
 Denise Paglina  
 Joyce Pakpke  
 Robin and Frank Palmeri  
 Joan and Mahendra Parekh  
 Lee Anne and David Parker  
 Wendy and David Parsons  
 Maryann and Charles

Pascarella  
 Carol and Barry Patterson  
 John Peckham  
 Alice and Robert Pezzulich  
 Margi and Michael Picotte  
 Maggie and John Picotte  
 Susan and Bill Picotte  
 Murrie and Michael Polifka  
 Marianne Pollak  
 Anita Pomerance  
 Alyssa and David Portny  
 Mary and John Powell  
 Barbara and Michael Powers  
 Joy and Matt Proft  
 Lana Prouty  
 Heather Putnam  
 Margi and Andy Putney  
 Edward Pyle  
 Jacqueline and James Quigley  
 Valerie and Peter Radford  
 Polly Raine and  
 Clement Yonkers  
 Alison and Constantine Ralli  
 Susan Ramsey  
 Norma and Marvin Rappaport  
 Adele and Herman Raspe  
 Carol Ravin  
 Barbara Reed  
 Tammy Rehm  
 Gretchen and Richard Reilly  
 Loretta and Stanley Reisman  
 Sheila and Daniel Riesel  
 Meg and Brooks Robbins  
 Judie Robbins  
 Rebecca and Donald Robinson  
 Christina and Kevin Roe

**In 2020 we offered  
 donors a chance  
 to contribute to a  
 Scholarship Fund.**

**We were pleased to be  
 able to offer assistance  
 to those in need in part  
 due to the following  
 contributors.**

Linda K. Adler  
 Carolyn Brogan and  
 Yoshi Akiyama  
 Anne and Geoffrey  
 Bennett  
 William Burke  
 Sherry and Glenn  
 Firestone  
 Howard Halligan  
 Jessie Hutcheson  
 Carol Jaffe  
 Arden Kahlo and  
 Stan Okin  
 Lee and Jock Lawrason  
 Joann Limbacher  
 Margo and Art McKenna  
 Linda and Bob  
 Mielenhausen  
 Robin and Frank Palmeri  
 Helene Quinn  
 Polly A. Raine  
 Ann and Alfred Ruesch  
 Barbara Sarvis  
 Paula and Richard  
 Schwartz  
 Gay Thimm  
 Constance West  
 Susan J. White  
 Nancy and Thomas  
 Ziegler





**Supporting Members**  
(continued)

- |                               |  |                                  |                                   |
|-------------------------------|--|----------------------------------|-----------------------------------|
| Tamara and Anthony Rogers     | Carol Scott                              | Norma Susswein Saks              | Cornelia Tuttle                   |
| Linda and Mikel Rollyson      | Katharine and Laurence Senn              | Derry Taylor                     | Barbara and Richard Urso          |
| Joann Rooney                  | Joanne and Edward Shapoff                | Debbie Tegen                     | Sally Utiger                      |
| Elaine and Paul Ross          | Jennifer and Andrew Shaw                 | Margaret Telscher and Tom Snopek | Rosemary and Louis Valerio        |
| Erin Ross and Peter Hershberg | Frances Shaw-Brabazon and Peter Brabazon | Carroll Terry                    | Mary Anne and Bob Van Degna       |
| James Rowen                   | Sandra Sheppard                          | Carol and Eustace Theodore       | Zaid Van Giffen and Jeremy Walker |
| Anna-Maria and Dontrell Royal | Marcia Shipman                           | Wenke Thoman and William Sterns  | Peter Van Ness Philip             |
| Ina and Al Rubin              | Lynn and Ron Simmons                     | Mary Thompson                    | Kim Van Olpen                     |
| Joana and Ariel Rudiakov      | Elsie Smith                              | Shirley and Timothy Thompson     | Tamara Vecere and Charles Sinesi  |
| Ann and Alfred Ruesch         | Susan Sommer and Stephen Warnke          | Patricia and Peter Thompson      | Sunny and Frank Velie             |
| Ernest Ruppe                  | Gay and Roger Squire                     | Kim Thomson                      | Barbara and Charles Vengrove      |
| Christine and Kenneth Rush    | Mary Squire                              | Patrice Thornton-Dahlem          | Gladys Villalobos                 |
| Eric Russell                  | Katherine and Adam Stauffer              | Joan and Richard Tilghman        | Fern and Joe Wagner               |
| Christie Salomon              | Theresa-Anne Stobb                       | Carroll and Frederick Tobin      | Crystal Walters                   |
| Craigin and James Salsgiver   | Timothy Storch                           | Jane and Bill Told               | Virginia Warren                   |
| Jill and David Sands          | Stanley Stroup                           | Sheila Townsend                  | Anna and Steve Webersen           |
| Janie and George Schildge     | Carolyn and Bill Stutt                   | Nancy Truettner                  | Elizabeth and Robert Webster      |
| Linda and William Schroeder   | Judith Stutt                             | Susanne Tumelty                  | Mary Webster                      |
| Paula and Richard Schwartz    | Cathrine and J.D. Sullivan               |                                  |                                   |

Courtney and Matthew Weir	Adrien Broom	Ann Graham	Carol Luders
Susan and John Weiss	Katherine Buchmayr	Katherine Gray	Bonny Lundy
Debra and Samara Weiss	Ingrid Buckley	Leslie Gussin	Georgine MacGarvey
Barbara and Robert Wells	Nancy Burgess	Adam Hagen	Jill Magi
Constance West	Jill Burke	Anne Harhay	Richard Manley
Karen and Bernard Whalen	Shelagh Costello Burke	Stacy Harshman	Jeanne Marklin
Tobin White	Judith Carbine	David Hatfield	Pamela Marron
Roberta and William White	David Carmichael	Kathleen Havens	Linda Masten
Tracey and Dansby White	Linde Caughey	Irma Hawkins	Sandy Mayo
Deborah and William Wight	Matthew Chinian	Janet Hayes	Marion McChesney
Camilla Williams	Donna Ciobanu	Lesley Heathcote	Mark Mellor
Gail Williams	Irene Cole	Kelly Hickey	Julie Merwin
Fadia Williamson	Daniel Conley	Beth Hildick-Smith	Thomas Merwin
Barbara Wolff	Art Costa	Ghetta Hirsch	Roseann Metrinko
Laura and Peter Wolfson	Mary Angela Costabile	Susan Hoffer	Jack Metzger
Sandra Wood	Ruth Crotty	Jennifer Hooley	Robert Mielenhausen
Dana and Joe Woody	Stacey Cushner	Jacob Houston	Laurie Miles
Constance and Marvin Wool	Lynda Johnson Dailey	Nancy Howe	Elinor Miller
Jane Worley and Jay Reichman	James Daly	Betsy Hubner	Hilary Mills Lambert
Gertrude Yager	Alan Del Vecchio	Charlie Hunter	Catherine Minnery
Barbara Zapin and Matthew Lerman	Liz Hawkes deNiord	Don Ihde	Mariel Miranda
Lou and Bruce Zellner	Cheryl Derby	Victoria Jefferies	Chalice Mitchell
Michele and Elliott Zide	Robert Diken	Alan Jeffery	Dan Mosheim
Nancy and Tom Ziegler	Marian Dioguardi	Rumara Jewett	Diane Moudouris
Sarah and Steve Zoric	Maria Doglio	Peter Jeziorski	Robert Moylan
	Thomas Doolan	Valerie Johnson	Allison Munoz
	Nina Dubois	Doris Kail	Joan Murdock-Wilson
	Abby DuBow	Asheley Kapelewski	Pat Musick Carr
	Robert DuGrenier	Muffy Kashkin Grollier	Paul Myers
	E. Spaulding Dunbar	Elinor Katz	Beth Nagle
	Kenny Eicher	Sally Keefe	Kathleen Needell
	Janet Eldridge-Taylor	Jacqueline Kelly	Elizabeth Nelson
	Michael Ellenbogen	Thom Kerr	Christine Nemeć
	Judith Eilers	Clarence King	Elizabeth O'Brien
	Barrack Evans	Danielle Klebes	John Clarke Olson
	Jonny Farrow	Rose Klebes	Judy Pagnucco
	Dorothea Ferone	Travis Kline	Gloria Palmer
	Denise Fink	Stephanie Kossmann	Francine Panely
	Kathleen Fleming	Cristine Kossow	Amy Panitz
	Peggy Floume	Jean Kroeber	Ivor Parry
	Andrea Fono	Leena Kutti	Walter Pasko
	Jeanette Fournier	Ned Lacy	Matthew Peake
	Kate Franklin	David Ladd	Gail Peck
	Haley Frano	Robert Lafond	Christopher Pierce
	Maria French	Margo Lemieux	Nancy Pierson
	Dona Mara Friedman	Marian Lewis Wohlsen	Lori Pietropaoli
	Randy Frost	Deborah Liljegren	Anna Polesny
	Nancy-Jo Funaro	Anharad Llewelyn	Monica Pommier Kravitt
	Gisela Gamper	Mary Fran Lloyd	Andriy Portyanko
	Kate Goetz	Andy Longacre	Lynn Pratt
	Colin Goldberg	Patricia Lovell	Ellen Questel

### Artist Members

Judy Ackerhalt  
Vivian Ciolli Ackerman  
Linda Adler  
Ken Ahlering  
Marilyn Allen  
Angela Arkway  
David Arthur  
Bill Aupperlee  
Lynne Averill  
Misoo Bang  
John Baun  
Brenda Bechtel  
Patricia Tracy Dow Beveridge  
Jeff Bishop  
Bob Blackmon  
Dale Sherman Blodget  
Tiina Bockrath  
Joy Bollard  
Lauren Booth  
Lori Bradley  
Anita Broad  
Jordan Broadworth  
Margaret Brogan

**Artist Members (continued)**

Abby Raeder  
Dale Raisig  
Jan Raymond  
Edwin Reade  
Todd Reuben  
Mallory Rich  
Annie Richardson  
Bryan Richeimer  
Elizabeth Ricketson  
Cynthia Rosen  
Ron Rosenstock  
Barbara Rowles  
Barbara Hageman Sarvis  
Karen Schaefer  
Carlin Scherer  
James Schlessinger  
Steven Schlusell  
Alyssa Schmidt  
Irene Schultz  
Claudia Schwartz  
Michael Schwartz  
Mary Schwartz  
Claudia Schwartz  
Olga Schwede  
Ann Scott  
Stanton Sears  
Eric Sepowitz  
Karen Seward  
Carolyn Shattuck  
Dianne Shullenberger  
Mark Sickler  
Shari Siegel  
Lauren Silver  
Michael Sizemore  
Roxanne Skinner  
Gail Skudera  
Raymond Smith  
Carol Smith  
Sandra Spahr  
Susan Spengler  
Kathy Stark  
Carol Stephens  
Catherine Stewart  
Heather Stivison  
Cath Stockbridge  
Piper Strong  
Anthony Surratt  
Lian Swiernik  
Valerie Takvorian  
Diana Talcott

Edward Tanenhaus  
Terry Teitelbaum  
Phil Thorne  
Emily Tironi  
Sarah Tortora  
Mark Tougias  
Oscar Trugler  
Robert Tucker  
Paul Uman  
Julian Ungano  
David Utiger  
Bob Van Degna  
George Van Hook  
Darlene Van Sickle  
David Varker  
Susan Wadsworth

Katrin Waite  
Trish Weill  
Susan Weiss  
Susan Whiteman  
Susan Wilson  
Elaine Franz Witten  
Sarah Witter  
Amy Worth  
Janet Marie Yeates  
Kim Eng Yeo  
Helen Young  
Kenneth Young  
Xingning Zhao  
Rebekkah Lynne Ziel



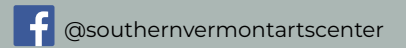


PO Box 617  
Manchester, VT 05254

LOCATION:  
930 SVAC Drive / West Road  
Manchester Center, VT 05254



[svac.org](http://svac.org)  
802-362-1405



The Southern Vermont Arts Center is a multidisciplinary arts organization in Manchester, VT with a mission to promote and nurture the arts. SVAC strives to provide opportunities for local and regional artists, to introduce the wider community to artwork and performances of national relevance, and to engage diverse audiences. To do this, SVAC creates a community space for the arts through exhibitions and events at Yester House and the Elizabeth de C. Wilson Museum; concerts and performances in the Louise Arkill Pavilion; adult art workshops and children's summer camps in the Hay Madeira Education Studios; and trails throughout its 100-acre campus and the Stroup Family Sculpture Park.

The Southern Vermont Arts Center is a 501(c)(3) organization. All gifts are tax deductible to the extent allowable by law.

Photography contributed by Abby Raeder and Dave Barnum.



PO Box 617  
Manchester, VT 05254

LOCATION:  
930 SVAC Drive / West Road  
Manchester Center, VT 05254

[svac.org](http://svac.org)

